



Ministry of Health Uganda

Weekly Epidemiological Bulletin

Highlights of the week

- Cholera outbreak in Busia and Kampala Districts
- End of Ebola outbreak declared in Sierra Leone

Summary Table

Indicator	Week 43 2015	Week 44 2015
% Districts	100	100
Ave % HU	55	61
% Timely reports	*	*
AFP	1 (0)	4 (0)
Animal bites	169 (0)	255 (0)
Cholera	0	0
Dysentery	700 (1)	630 (0)
Guinea Worm	0	0
Malaria	115104 (36)	116100 (42)
Measles	118 (0)	164 (0)
Meningitis	6 (3)	5 (0)
NNT	1 (0)	1 (0)
Plague	0	0
Typhoid	1093 (0)	1121 (0)

*Indicator not provided

Completeness of Reporting

All districts reported with average completeness 61% in week 44 up from 55% in week 43. Up to 25 districts achieved the national target of $\geq 80\%$ of the health facilities reporting rate, and 5 districts i.e. Kileleshwa, Amudat, Dokolo and Rubirizi had 100% completeness. Namayingo, Lyantonde, Lwengo and Mubende had less than 20% reporting facilities. The surveillance league table indicated 18 best districts had on average achieved $\geq 80\%$ and 5 worst districts, have been presented in **Figure 1**.

Epidemiological week 44 of 2015 [26th Oct – 1st Nov 2015]

Disease Outbreaks

Cholera in Hoima District:

The outbreak started on 28th September 2015 in Nkondo II village, Nkondo Parish, Kabwoya Sub-county in Hoima District. In week 44 data, no cholera case was reported by Hoima. Several cases were managed at Nkondo Treatment Centre, until mid-October, when this CTC was closed because there were no more cases. There were no new cases admitted at Kaiso-Tonya cholera treatment centre. By 12th November, a total of 180 cases (1 health facility and 5 community deaths; case fatality rate 3%) had been reported (**Table 1**). The average age is 18.7 years; with 67 years and 1.5 years as maximum and minimum ages respectively. By sex, 105 (62%) of the cases were males, mostly fishermen and children. Twelve samples processed at Central Public Health Laboratories were culture positive for *Vibrio cholerae* 01 Inaba. Additional 27 samples tested positive with the Cholera rapid diagnostic test.

Table 1: Summary statistics of the cholera outbreak in Hoima district

No	Summary of cases	Total Number
1	New suspect cases today	0
2	New deaths	0
3	Cumulative cases (suspect and probable)	180
	Five years and below	57
	Above five years	123
4	Cumulative deaths (probable & confirmed cases)	6
	• Health Facilities	1
	• Community	5
5	Total number of cases on admission	0
6	Cumulative cases discharged	174
7	Cumulative cases of Health Care Workers	0
8	Cumulative specimens collected	32
9	Cumulative cases with lab. confirmation	32
10	Cholera RDT Positive cases	27
11	Culture positive cases	12

Busia District Cholera outbreak

As of 13th November 2015, a total of 52 cases (2 deaths, CFR 3.8%) have been reported in Busia Municipality. The index case was identified on 29th October 2015 and 3 more cases were reported on 30th October. Two samples have been confirmed positive by culture (*Vibrio cholerae*) and 1 RDT positive for Cholera. Currently, 3 patients are on admission at Busia HC IV. Some cases have also been treated at Masafu and Dabani Hospitals. The deaths were in health facilities; one reported late and died on arrival.

Actions: The DHT alerted the national level within the stipulated 48 hours of reporting. The national response team is working with the district. Medical supplies have been sent to the district to support case management.

Cholera outbreak in Kampala district: By 13th November, five cases had been treated in Kiswa HC IV; and of the samples submitted to Central Public Health Laboratories, one was confirmed positive for *Vibrio cholerae*. The cases were from Kanyogoga zone in Namuwongo Parish, Makindye Division. A CTC has been set up in Mulago (in the Ebola VHF isolation facility) to manage all the cases.

Unknown illness in Buliisa & Hoima districts: On 23rd September 2015, the Ministry of Health received information on suspected haemorrhagic fever in Buliisa and Hoima districts. According to the detailed investigations conducted, interaction between chronic schistosomiasis and alcohol consumption accounted for majority of the deaths. By 12th November, there were no new cases reported in Hoima Regional Referral Hospital or in other facilities.

Acute diarrhoea cases in Rwebisengo, Ntoroko district: No new cases were reported by the community and health facility surveillance has continued. The event was reported on 15th October and so far, 128 cases have been treated, with no death. Laboratory samples (5) tested at CPHL indicated 2 as *Shigella* species positive by culture and isolation.

Malaria: Malaria cases were 116100 in week 44. Gulu, Moyo, Kasese, Adjumani, Yumbe and Arua reported more than 3000 cases. The cases in the 10 outbreak districts in Northern Uganda and Arua remain slightly above the normal channels (**Figures 2-12**).

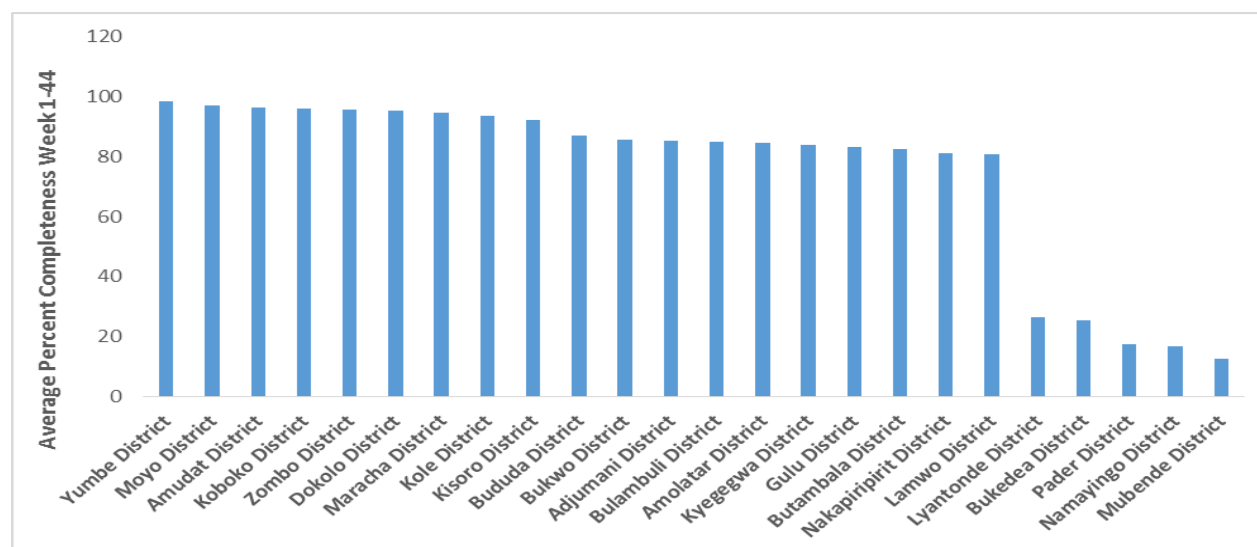


Figure 1: Average percent reporting rate (completeness) of the best ($\geq 80\%$) and worst performing districts from weeks 1 - 44

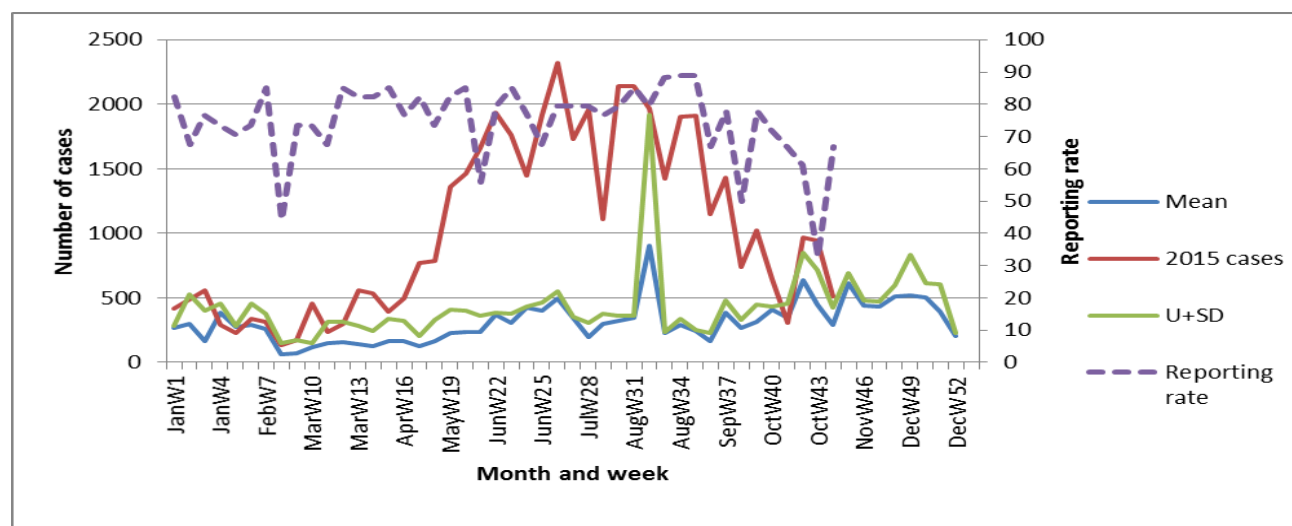


Figure 2: Malaria normal channels and reporting rates for Nwoya district

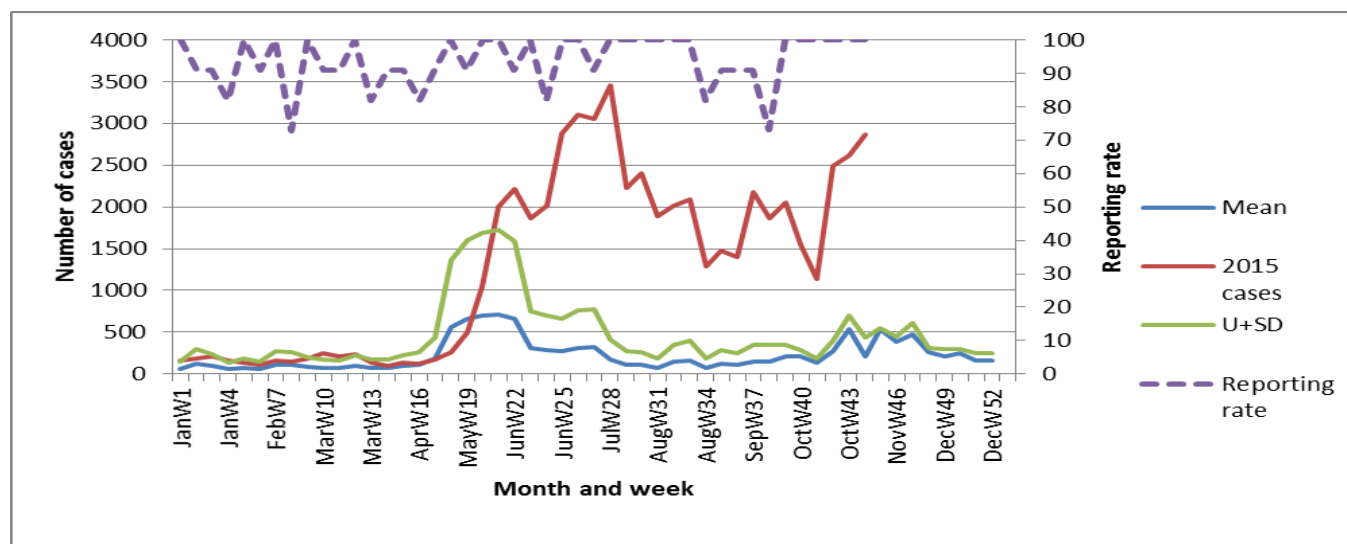


Figure3: Malaria normal channels and reporting rates for Kile district

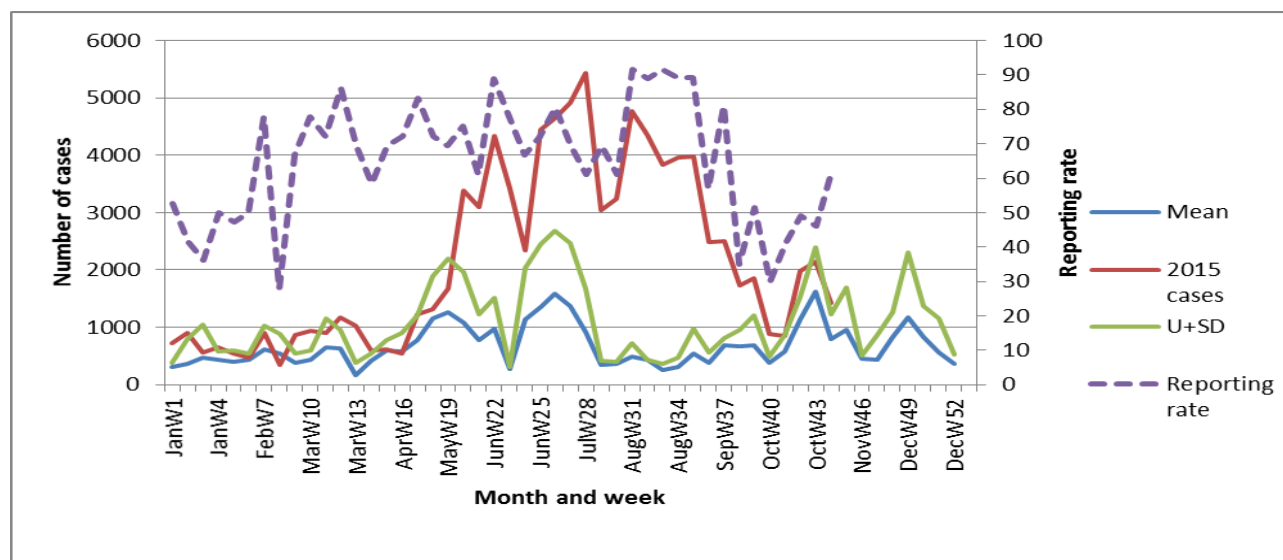


Figure 4: Malaria normal channels and reporting rates for Apac district

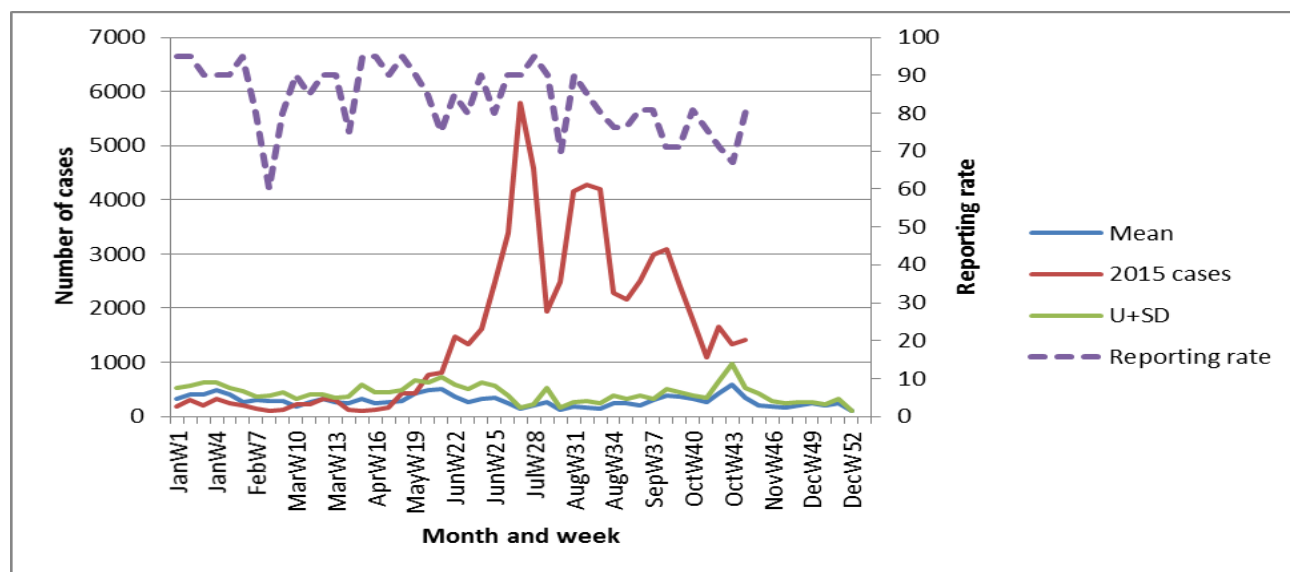


Figure 5: Malaria normal channels and reporting rates for Lamwo district

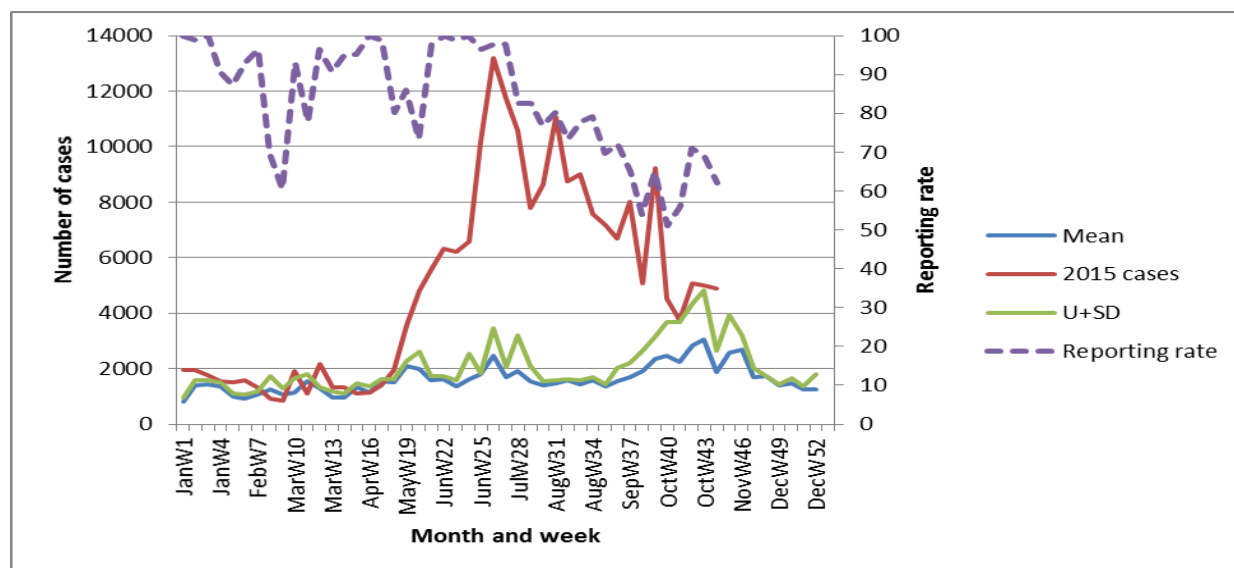


Figure 6: Malaria normal channels and reporting rates for Gulu district

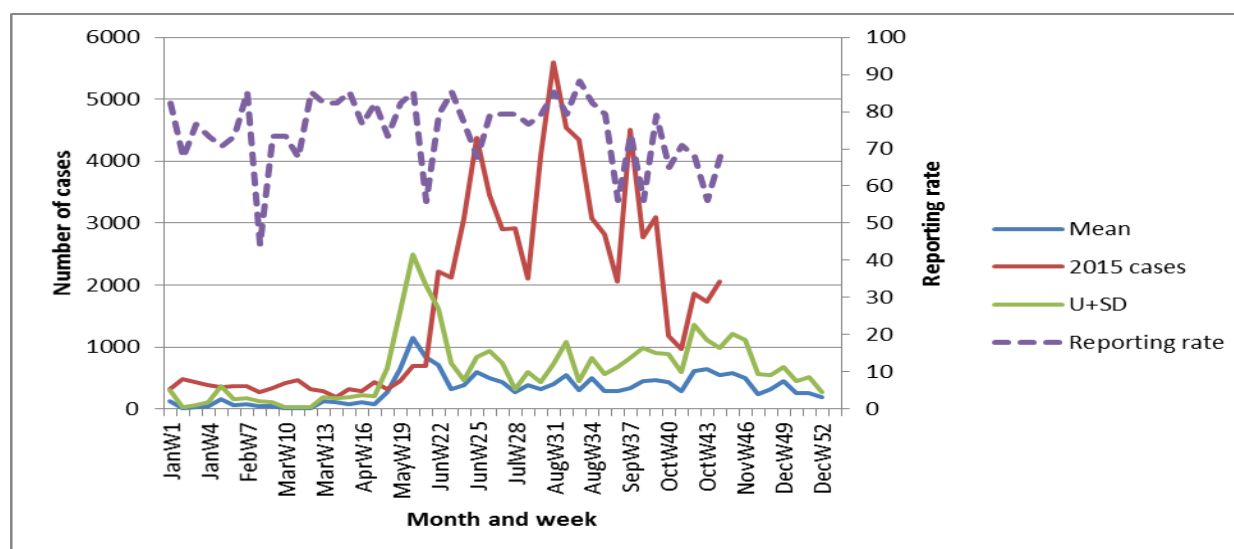


Figure 7: Malaria normal channels and reporting rates for Agago district

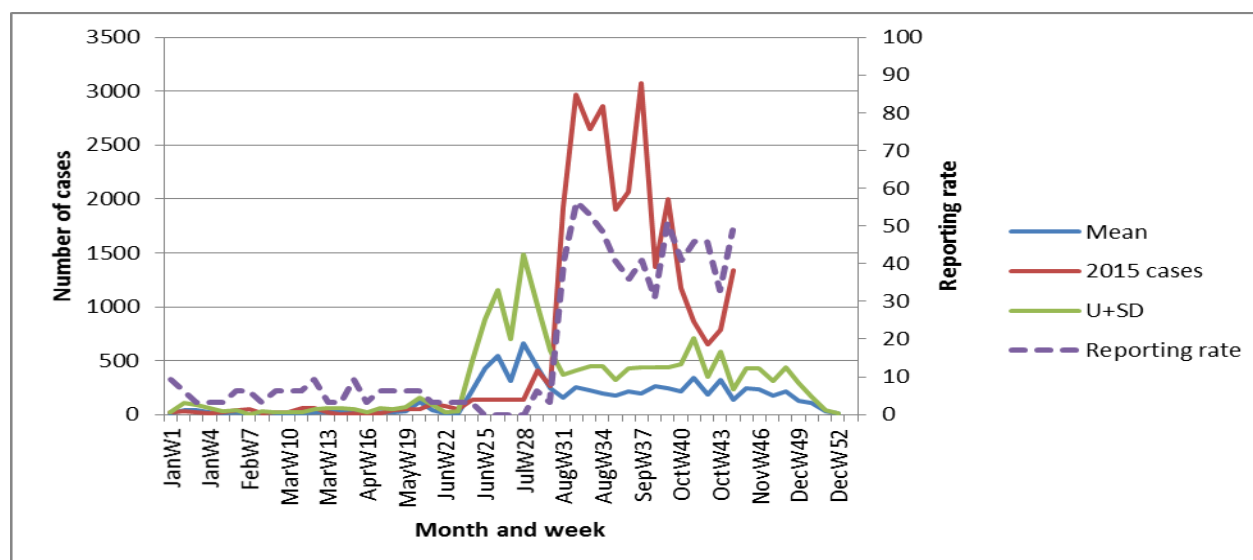


Figure 8: Malaria normal channels and reporting rates for Pader district

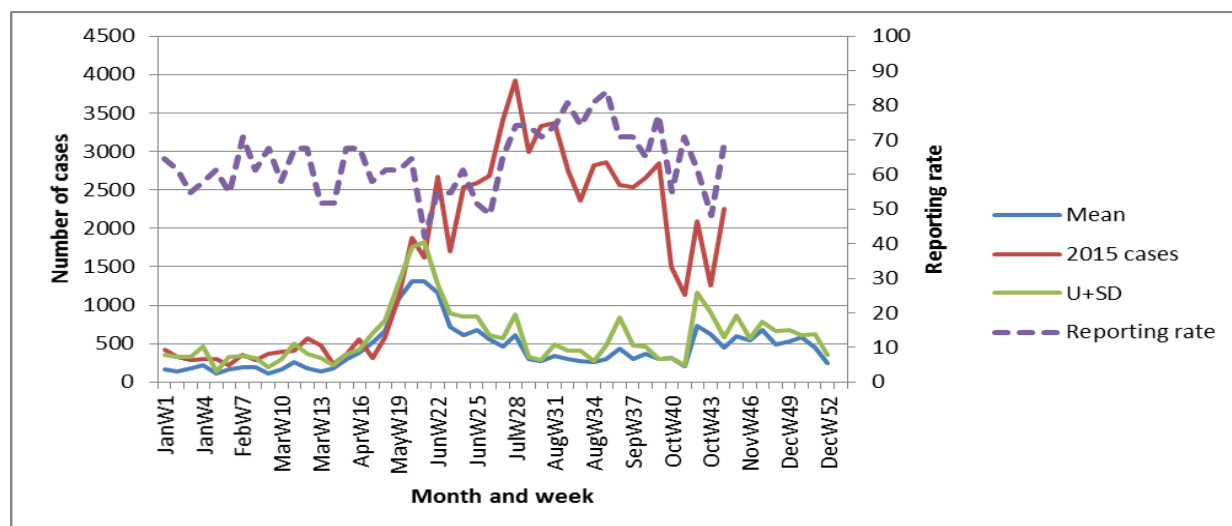


Figure 9: Malaria normal channels and reporting rates for Oyam district

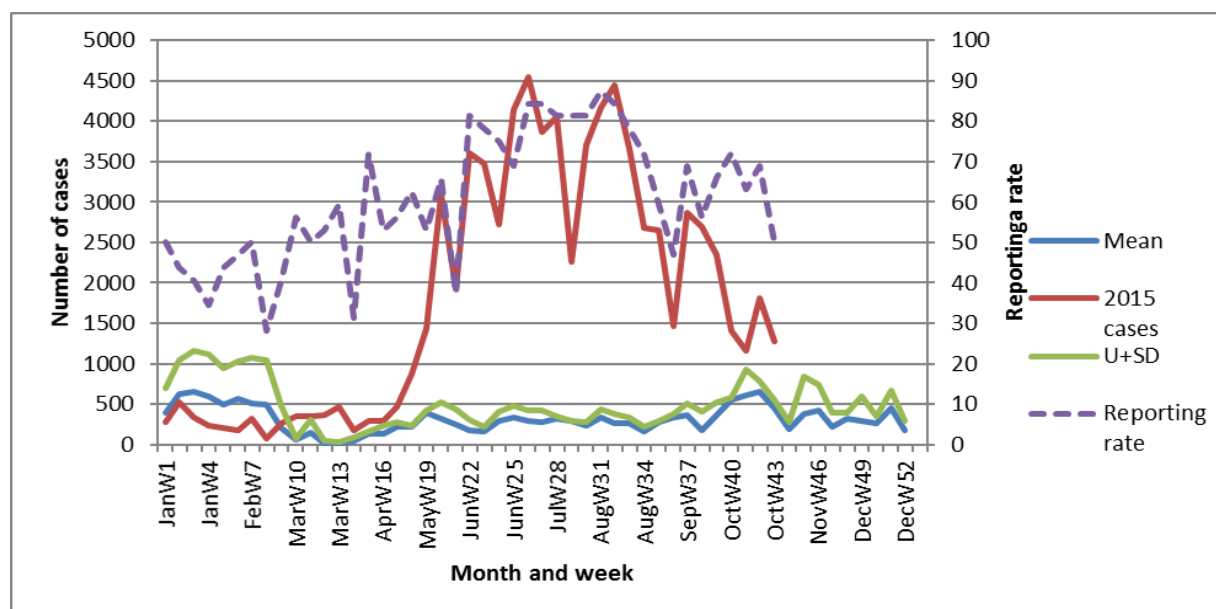


Figure 10: Malaria normal channels and reporting rates for Amuru district

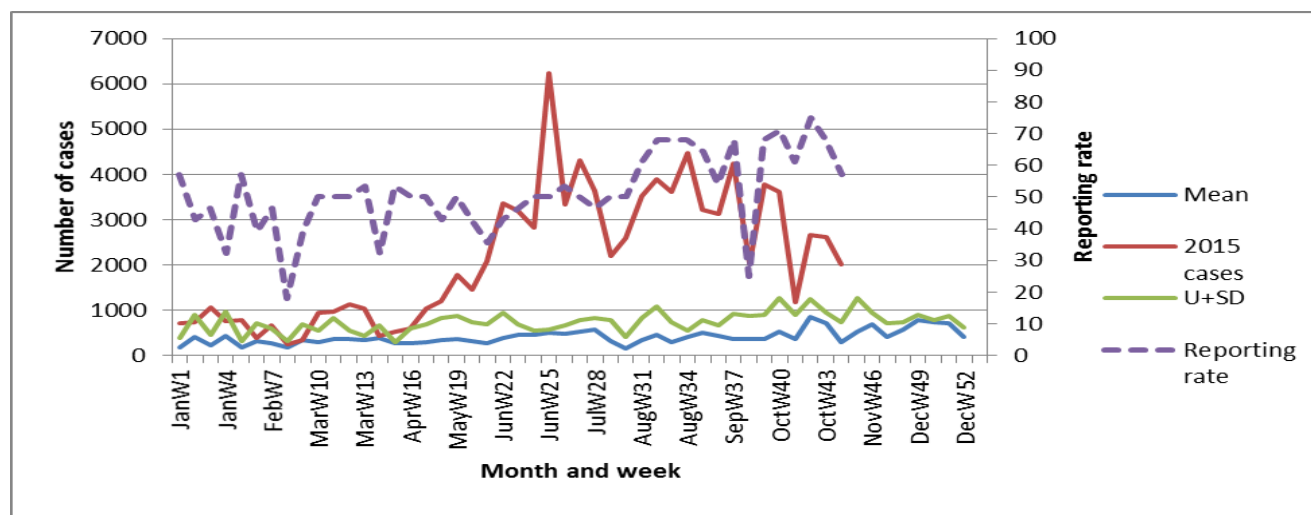


Figure 11: Malaria normal channels and reporting rates for Kitgum district. The increase in number of cases reflects the change in reporting rate but cases are still above the normal channel.

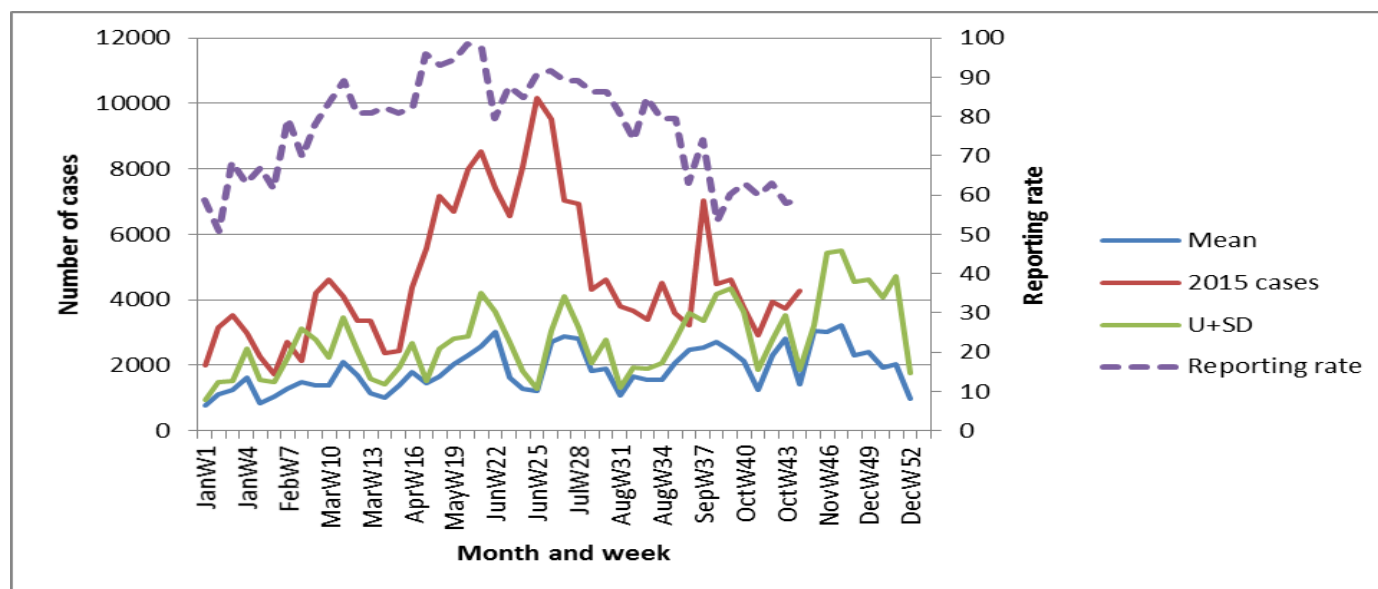


Figure 12: Malaria normal channels and reporting rates for Arua district

Other priority diseases

AFP: Every district has reported at least one AFP case this year. In week 44, 4 cases were reported in Kampala (Mulago Hospital), Lamwo (Ngomoroma HC II), Lira (Walela HCII) and in Napak (Morulinga HC II). The Non-polio AFP rate is 2.49/100,000 children aged 0 – 14 years compared to Non-polio AFP rate of 2.14/100,000 in the corresponding week of 2014.

Typhoid fever: In week 44, up to 75 districts reported at least one case of typhoid, and 18 of these exceeded the alert threshold of 20 cases (**Figure 13**). Although cases reported in Kampala city reduced from 115 to 70 cases, the highest number of suspected typhoid cases was reported by Mbale followed by Kibaale. **Action:** A team will be constituted to investigate the reported cases.

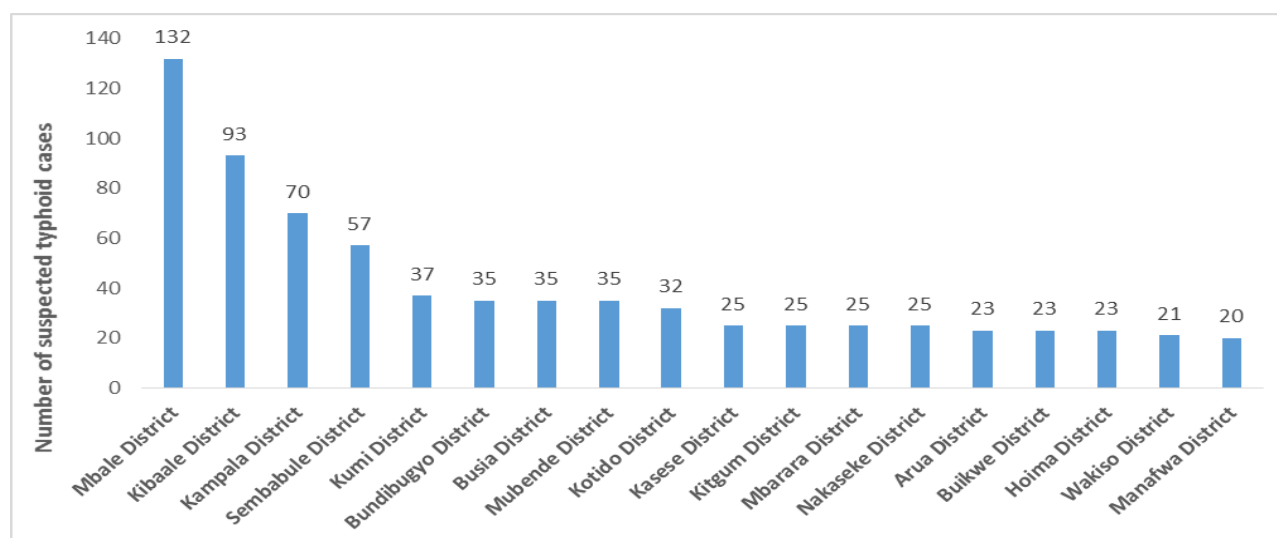


Figure 13: Districts reporting suspected typhoid cases above the alert threshold of ≥ 20 cases

Measles: The number of suspected measles cases increased by 39% in week 44 compared to week 43. The number of districts which reported 5 or more suspected cases doubled from 7 to 14 (**Figure 14**). Despite the recent mass vaccination campaign, Kamwenge, Kampala and Wakiso have continued to report high number of cases.

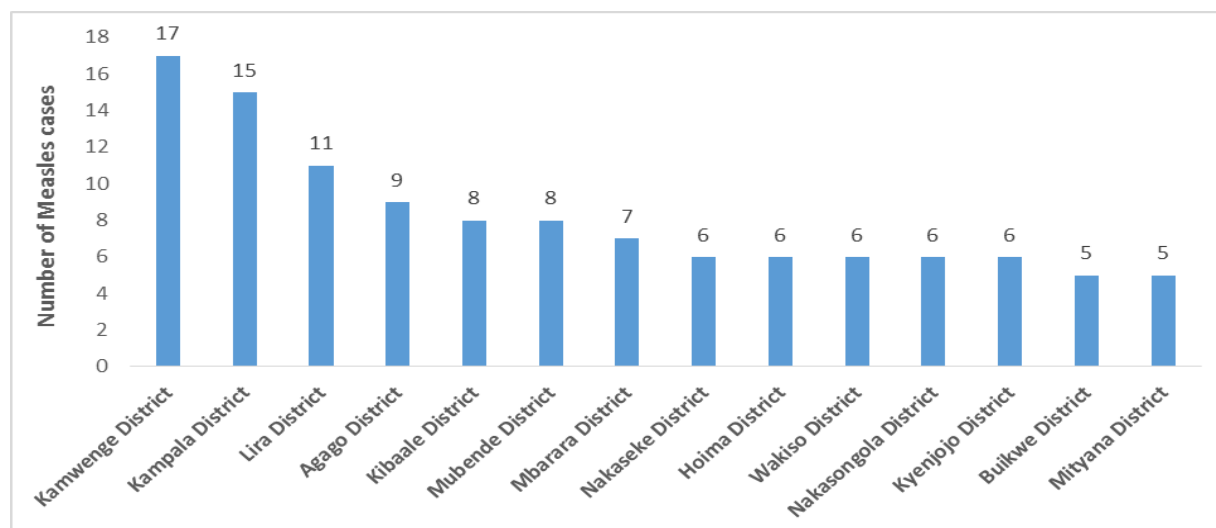


Figure 14: Districts reporting 5 or more cases of measles in week 44, 2015

Maternal deaths: A total of nine deaths were reported from 9 health facilities (**Table 2**). Four of the seven facilities that reported deaths in week 43 have submitted the maternal audit forms, which are used to investigate the causes of death and in respective control interventions.

Table 2: Reported maternal deaths in week 44

District	Division/Town Council	Health Facility	Number of deaths
Mityana	Mityana Town Council	Mityana Hospital	1
Mubende	Mubende Town Council	Mubende RR Hospital	1
Mbale	Mbale Northern Division	Mbale Regional Ref Hospital	1
Lira	Adyel Division	Lira Regional Ref Hospital	1
Zombo	Nyapea Subcounty	Nyapea HOSPITAL	1
Mbarara	Nyamitanga Division	Holy Innocents Children's Hospital	1
Kasese	Kisinga Subcounty	Kagando Hospital	1
Kabale	Maziba Subcounty	Maziba Gvt HC IV	1
Mbarara	Kamukuzi Division	Mbarara Regional Ref Hospital	1

Influenza in Humans: The number of cases of influenza reported in the weekly surveillance system at Makerere University Walter Reed Project were four; two due to Influenza A (H1N1); one caused by A (H3) and the other by A unsubtypeable.

International Health Event

Ebola VHF in West Africa

Since the start of the outbreak, a total of 28,476 Ebola cases (suspected, probable and confirmed) have been reported, and 11,298 deaths have occurred. On 7 Nov 2015, WHO declared that Ebola virus transmission had been stopped in Sierra Leone, after the country completed 42 days since the last reported case was discharged. The country has now entered a 90-day period of enhanced surveillance, which is scheduled to conclude on 5 Feb 2016. Both Liberia and Sierra Leone have now achieved objective 1 of the phase 3 response framework: to interrupt all remaining chains of Ebola virus transmission.

Guinea reported no confirmed cases in the week to 8 Nov 2015. A total of 4 cases have been reported from Guinea in the past 21 days, all of who are members of the same family from the village of Kondayah, in the subprefecture of Kaliah in Forecariah. All 69 contacts currently being followed in Guinea are located in Kaliah and are scheduled to complete their 21-day follow-up period on 14 Nov [2015]. Confirmed 15,208 (not available) [3 cases in past 28 days]; Probable 2619 (not available); Suspected 10,649 (not available)

Editorial: Mr. J. Kissa, Dr. B. Masiira, Dr. M. Musenero, Mr. M. Mugagga, Dr. J. Wamala, Dr. I. Makumbi, Dr. R. Musoke, Dr. J. Sekajugo, Dr. F. Adatu, Dr. C. Okot, Dr. M. Nanyunja, Dr. I. Nabukenya

Founders: Dr. J. Kamugisha (RIP), Dr. J. Wanyana, Dr. M. Lamunu, Dr. C. Mugero, Dr. N Ndayimirigye, Mr. L. Luswa (RIP), Dr. N. Bakyaita, Mr. M. Mugagga

*For comments please contact: The Epidemiological Surveillance Division- M.O.H; P.O BOX 7272 Kampala, Tel: 0414-340874/0414-345108;
Email: esd@health.go.ug or esduganda@yahoo.co.uk*

Summary table for epidemiological reports received for week ending 2nd November 2015

(Numbers in brackets indicate deaths)

District	% of H/U reporting	AFP	Animal bites	Cholera	Dysentery	Guinea Worm	Malaria	Measles	Meningitis	NNT	Plague	Typhoid Fever
Abim	60	0	0	0	5	0	281	0	0	0	0	1
Adjumani	94	0	0	0	26	0	4570(1)	0	0	0	0	0
Agago	68	0	5	0	12	0	2,061	9	0	0	0	8
Alebtong	85	0	2	0	2	0	353	1	0	0	0	9
Amolatar	62	0	0	0	1	0	184	0	0	0	0	0
Amudat	100	0	0	0	4	0	194	0	0	0	0	0
Amuria	56	0	4	0	5	0	2,430	0	0	0	0	10
Amuru	63	0	0	0	9	0	1,977	0	0	0	0	1
Apac	62	0	6	0	0	0	1427(2)	0	0	0	0	0
Arua	59	0	4	0	35	0	4,280	0	0	0	0	23
Budaka	81	0	0	0	2	0	486	0	0	0	0	4
Bududa	67	0	1	0	5	0	596	0	0	0	0	3
Bugiri	60	0	1	0	10	0	1282(1)	2	0	0	0	15
Buhweju	53	0	0	0	0	0	69	4	0	0	0	0
Buikwe	57	0	5	0	14	0	1,077	5	0	0	0	23
Bukedea	25	0	0	0	0	0	26	0	0	0	0	0
Bukomansimbi	65	0	0	0	0	0	231	0	0	0	0	0
Bukwo	44	0	3	0	12	0	173	0	0	0	0	9
Bulambuli	79	0	0	0	1	0	529	0	0	0	0	0
Buliisa	91	0	0	0	3	0	435	0	0	0	0	2
Bundibugyo	87	0	2	0	14	0	1,889	0	1	0	0	35
Bushenyi	49	0	0	0	2	0	547	2	0	0	0	0
Busia	72	0	5	0	7	0	1967(1)	1	1	0	0	35
Butaleja	58	0	0	0	4	0	830	0	0	0	0	0
Butambala	65	0	0	0	1	0	148	0	0	0	0	0
Buvuma	27	0	0	0	0	0	60	0	0	0	0	0
Buyende	91	0	0	0	0	0	610	0	0	0	0	0
Dokolo	100	0	5	0	5	0	956	0	0	0	0	4
Gomba	90	0	0	0	2	0	511	0	0	1	0	0
Gulu	62	0	6	0	32	0	4,908	0	0	0	0	7
Hoima	34	0	6	3	13	0	1,037	6	0	0	0	23
Ibanda	42	0	0	0	0	0	1,024	0	0	0	0	0
Iganga	54	0	4	0	2	0	1357(1)	0	0	0	0	1
Isingiro	81	0	0	0	6	0	1,372	0	0	0	0	12
Jinja	24	0	6	0	7	0	1315(4)	2	0	0	0	17
Kaabong	85	0	5	0	10	0	823	0	0	0	0	1
Kabale	68	0	4	0	0	0	140	0	0	0	0	0
Kabarole	52	0	4	0	5	0	1007(4)	0	1	0	0	0
Kaberamaido	48	0	0	0	2	0	473	0	0	0	0	5
Kalangala	41	0	0	0	1	0	30	3	0	0	0	0
Kaliro	76	0	0	0	0	0	1,396	0	0	0	0	3
Kalungu	52	0	0	0	2	0	270	4	0	0	0	0
Kampala	24	0	36	0	8	0	964	15	0	0	0	70
Kamuli	36	0	0	0	0	0	1,045	0	0	0	0	0
Kamwenge	59	1	1	0	4	0	2107(2)	17	0	0	0	1
Kanungu	50	0	0	0	3	0	391	0	0	0	0	16
Kapchorwa	85	0	0	0	11	0	425	0	0	0	0	1
Kasese	71	0	5	0	12	0	2940(1)	0	0	0	0	25
Katakwi	42	0	4	0	1	0	756	0	0	0	0	0
Kayunga	57	0	3	0	10	0	1,278	2	0	0	0	2
Kibaale	23	0	2	0	2	0	667(1)	8	0	0	0	93

District	% of H/U reporting	AFP	Animal bites	Cholera	Dysentery	Guinea Worm	Malaria	Measles	Meningitis	NNT	Plague	Typhoid Fever
Kiboga	46	0	2	0	1	0	251	2	0	0	0	16
Kibuku	80	0	0	0	2	0	430	1	0	0	0	0
Kiruhura	37	0	0	0	0	0	850	3	0	0	0	0
Kiryandongo	77	0	2	0	2	0	1,271	1	0	0	0	5
Kisoro	79	0	1	0	0	0	106	2	0	0	0	2
Kitgum	57	0	3	0	22	0	2005(1)	0	0	0	0	25
Koboko	94	0	1	0	8	0	2032(1)	0	0	0	0	2
Kole	100	0	0	0	1	0	2,861	0	0	0	0	0
Kotido	26	0	0	0	1	0	98	0	0	0	0	32
Kumi	59	0	0	0	1	0	377	0	0	0	0	37
Kween	71	0	1	0	3	0	408	0	0	0	0	5
Kyankwanzi	48	0	0	0	3	0	214	0	0	0	0	13
Kyegegwa	87	0	0	0	1	0	941	2	0	0	0	0
Kyenjojo	36	0	6	0	3	0	554(1)	6	0	0	0	1
Lamwo	81	0	0	0	3	0	1,406	0	0	0	0	0
Lira	91	0	1	0	8	0	1393(2)	11	1	0	0	14
Luuka	52	0	0	0	0	0	971	3	0	0	0	4
Luwero	50	0	1	0	2	0	788	0	0	0	0	18
Lwengo	16	0	0	0	1	0	202	0	0	0	0	11
Lyantonde	13	0	0	0	0	0	232	0	0	0	0	3
Manafwa	71	0	2	0	5	0	892(1)	0	0	0	0	20
Maracha	64	0	3	0	3	0	473	0	0	0	0	10
Masaka	49	0	0	0	1	0	515(1)	3	0	0	0	7
Masindi	67	0	3	0	7	0	893	0	0	0	0	15
Mayuge	65	0	1	0	4	0	1,684	0	0	0	0	1
Mbale	47	0	4	0	10	0	1215(6)	1	0	1(1)	0	132
Mbarara	57	0	3	0	7	0	1,017	7	0	0	0	25
Mitooma	67	0	0	0	0	0	1,106	0	0	0	0	1
Mityana	46	0	9	0	1	0	1309(2)	5	0	0	0	0
Moroto	47	0	18	0	4	0	493	0	0	0	0	17
Moyo	95	0	1	0	19	0	3726(2)	0	0	0	0	19
Mpigi	60	0	0	0	0	0	653	0	0	0	0	0
Mubende	12	0	2	0	5	0	393(1)	8	0	1	0	35
Mukono	37	0	1	0	1	0	728	2	0	0	0	5
Nakapiripirit	65	0	5	0	22	0	714(1)	0	0	2(1)	0	7
Nakaseke	63	0	6	0	6	0	461	6	0	0	0	25
Nakasongola	23	0	1	0	4	0	394	6	0	0	0	16
Namayingo	19	0	1	0	1	0	618	0	0	0	0	0
Namutumba	59	0	0	0	7	0	1,494	2	0	0	0	4
Napak	86	0	4	0	13	0	682	0	0	0	0	1
Nebbi	86	0	9	0	37	0	3674(3)	0	0	0	0	18
Ngora	75	0	0	0	3	0	814	0	0	0	0	0
Ntoroko	67	0	2	0	0	0	148	0	0	0	0	1
Ntungamo	36	0	3	0	0	0	283	0	0	0	0	4
Nwoya	67	0	1	0	3	0	515	0	0	0	0	0
Otuke	80	0	0	0	0	0	487	0	0	0	0	0
Oyam	68	0	14	0	1	0	2,255	0	0	0	0	8
Pader	49	0	0	0	3	0	1,338	0	0	0	0	0
Pallisa	55	0	0	0	3	0	975	0	0	0	0	2
Rakai	49	0	0	0	14	0	1,502	2	0	0	0	12
Rubirizi	100	0	0	0	0	0	339	0	0	0	0	2
Rukungiri	49	0	0	0	0	0	784	4	0	0	0	0
Sembabule	42	0	0	0	1	0	681	0	0	0	0	57

District	% of H/U reporting	AFP	Animal bites	Cholera	Dysentery	Guinea Worm	Malaria	Measles	Meningitis	NNT	Plague	Typhoid Fever
Serere	62	0	1	0	3	0	866	0	0	0	0	0
Sheema	79	0	2	0	1	0	765	0	0	0	0	2
Sironko	67	0	1	0	1	0	944	0	0	0	0	0
Soroti	31	0	0	0	2	0	719(1)	0	0	0	0	1
Tororo	69	0	3	0	0	0	947	0	0	0	0	0
Wakiso	26	0	2	0	8	0	1,281	6	0	0	0	21
Yumbe	92	0	1	0	27	0	3083(1)	0	0	0	0	2
Zombo	95	0	5	0	29	0	946	0	0	0	0	4
National	61	1 (0)	255 (0)	0 (0)	630 (0)	0(0)	116100 (42)	164 (0)	5 (0)	1 (0)	0	1121 (0)

Key: Yellow: 100% reporting, Green: 80-99% reporting, Red: Below 80% reporting

HU= Health Units, AFP=Acute Flaccid Paralysis, NNT=Neonatal Tetanus, NR =Not Reported

Compiled by the Epidemiological Surveillance Division, Ministry of Health